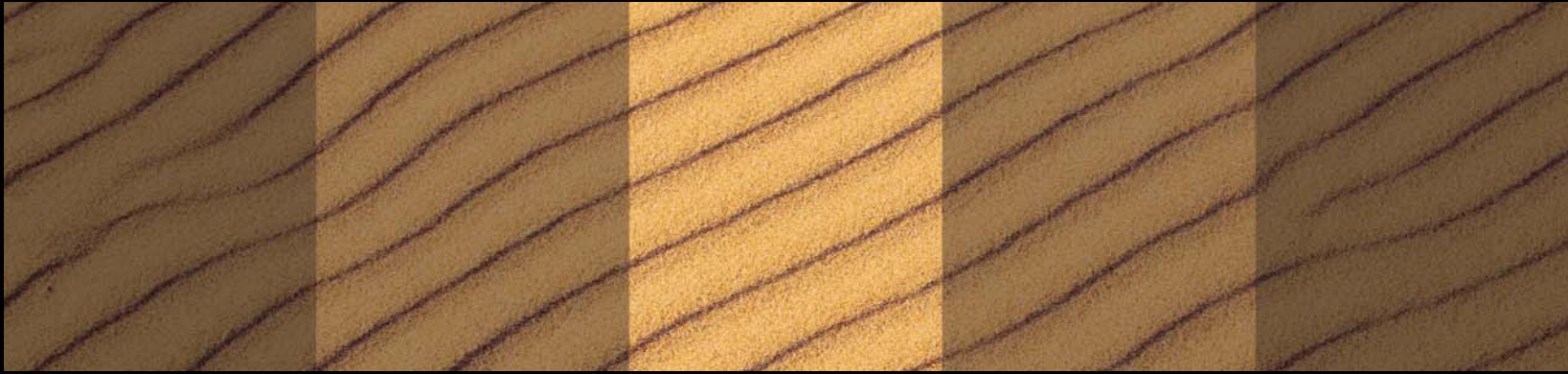


Cast in a new light



# SL-OCT™

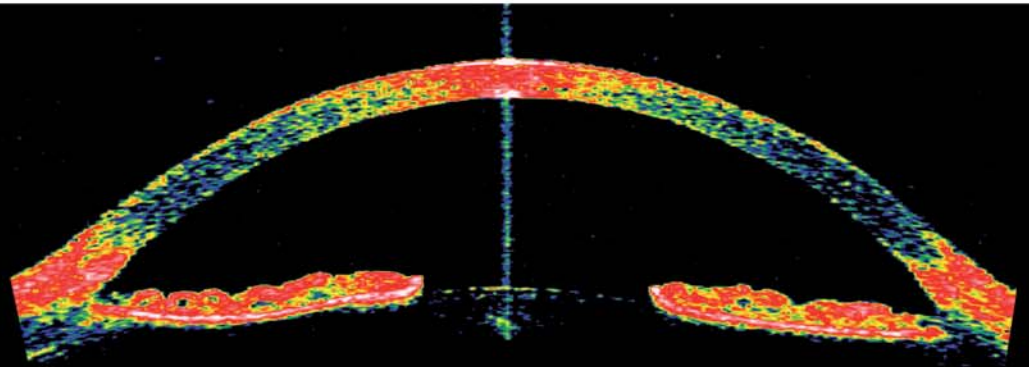
Slit Lamp + OCT™<sub>a</sub>

This product has not received FDA clearance.  
It is not available for sale in the United States.

**HEIDELBERG**  
**ENGINEERING**

# SL-OCT™

Anterior Chamber  
15 x 7 mm



## Fast, easy, non-contact anterior chamber analysis.

The SL-OCT is a winning combination of Optical Coherence Tomography (OCT) and slit lamp. It provides unmatched value and convenience and workflow efficiency.

- Allows OCT scanning at any position (360°) with the slit lamp beam as visual verification of the site of the OCT scan
- Conveniently stores patient data and provides printed reports for charting and/or patient education
- Displays and prints images in grayscale or false color



Narrowing of the AC\*

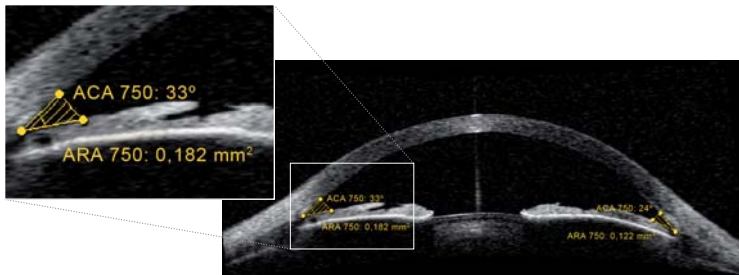


Swelling and Opacity of the Cornea, Shallow AC\*

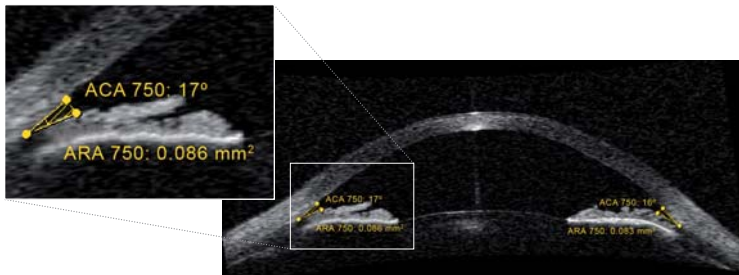
\* Pictures reproduced with the kind permission of Dr. Wirbelauer, Berlin, Germany

# Digital Gonioscopy™

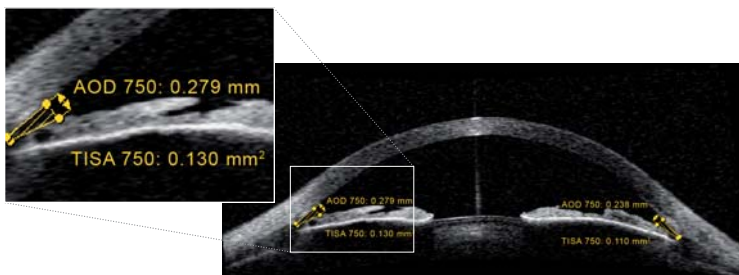
Slit Lamp-OCT™ (SL-OCT™) non-contact, high resolution anterior chamber imaging system



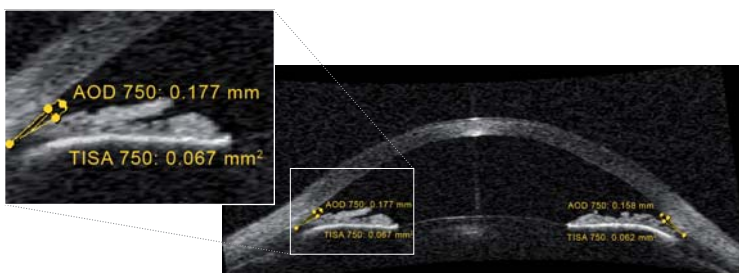
ACA, ARA, 750, OD light



ACA, ARA, 750, OD dark



ACA, TISA, 750, OD light



ACA, TISA, 750, OD dark

The SL-OCT enables non-contact, high resolution imaging of the chamber angles and objective Digital Gonioscopy™.

The proprietary SL-OCT software identifies the scleral spur and uses this physical landmark as the basis for accurate, objective angle measurement, including:

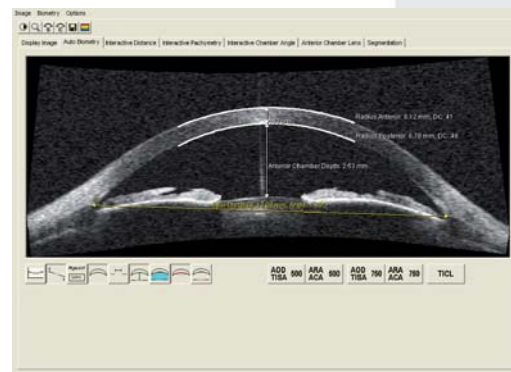
- ACA – Anterior Chamber Angle
- AOD – Angle Opening Distance
- ARA – Angle Recess Area
- TICL – Trabecular Iris Contact Length
- TISA – Trabecular Iris Space Area

# Biometry and Pachymetry Profile™

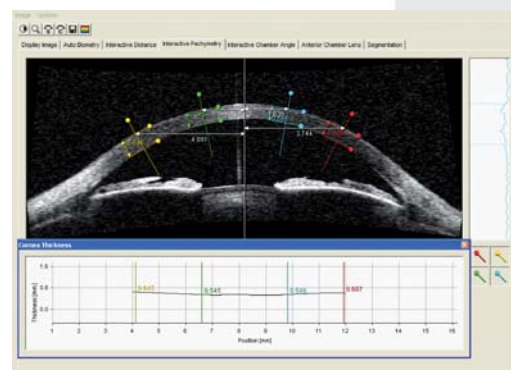
Slit lamp and anterior segment OCT in one device.

## The perfect complement to conventional slit lamp examinations.

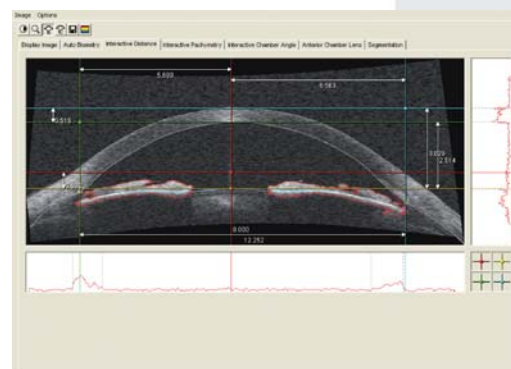
- Non-contact means no distortion of the eye so measurements are more accurate
- Multiple calipers allow customized measurement options
- Interactive Pachymetry Profile™ allows thickness measurement along and within the cornea
- Software quality checks ensure correct alignment for measurement accuracy



Automatic Biometry



Pachymetry Profile



Interactive Distance Measurements

# Specifications Slit Lamp-OCT™ (SL-OCT™)

Dual function instrument saves space  
and improves practice workflow.



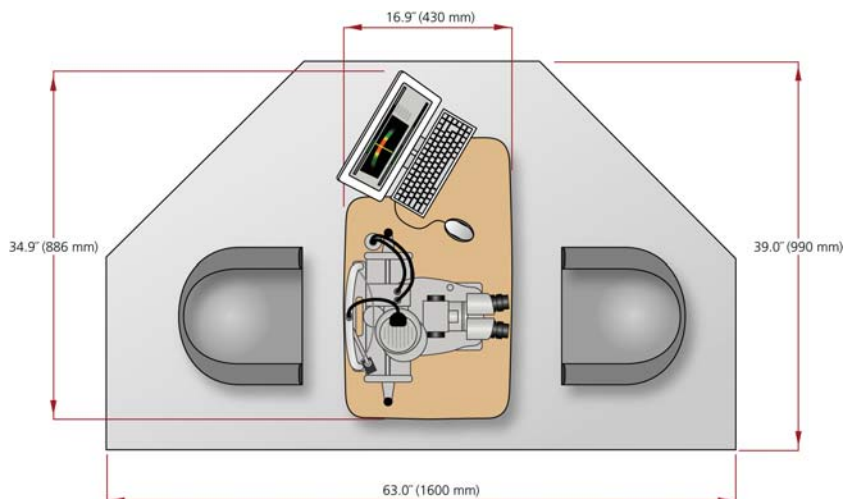
## Specifications Slit Lamp-OCT™ (SL-OCT™)

- 1310 nm SLD light source
- 256 MB memory
- 80 GB HDD or greater
- Scan width 15 mm
- Scan depth 7 mm
- Scan speed 200 Hz
- Dimensions with slit lamp: 47.2" (120 cm) high, 33.5" (85 cm) wide, 17.7" (45 cm) deep
- Weight with slit lamp: 117.9 lbs. (53,5 kg)
- Color/B&W camera can be added as an option

## Included on delivery

OCT Scanning Unit, HAAG-STREIT BD 900 Slit Lamp, Height-adjustable table,  
Computer, Monitor, Keyboard and Mouse

Technical data subject to change





**Corporate Headquarters**

Heidelberg Engineering GmbH • Tiergartenstr. 15 • 69121 Heidelberg • Germany  
Phone +49 6221 6463-0 • Fax +49 6221 646362 • [www.HeidelbergEngineering.de](http://www.HeidelbergEngineering.de)

Heidelberg Engineering GmbH • Rapsacker 1 • 23556 Lübeck • Germany  
Phone +49 451 39903-0 • Fax +49 451 39903-25 • [www.HeidelbergEngineering.de](http://www.HeidelbergEngineering.de)

**U.S.A.**

Heidelberg Engineering, Inc. • 1499 Poinsettia Avenue, Suite 160 • Vista, CA 92081  
Phone 760 598-3770 • Fax 760 598-3060 • [www.HeidelbergEngineering.com](http://www.HeidelbergEngineering.com)

Heidelberg Engineering, Inc. • 410 Harris Road • Smithfield, RI 02917  
Phone 401 349-0500 • Fax 401 349-0504 • [www.HeidelbergEngineering.com](http://www.HeidelbergEngineering.com)